

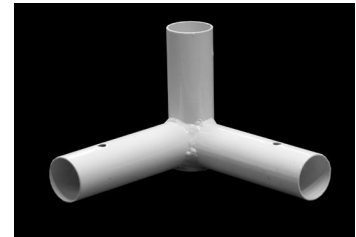
## The Craft Hut Canopy 10 x 10 Instructions for Assembly



Pole Coupler



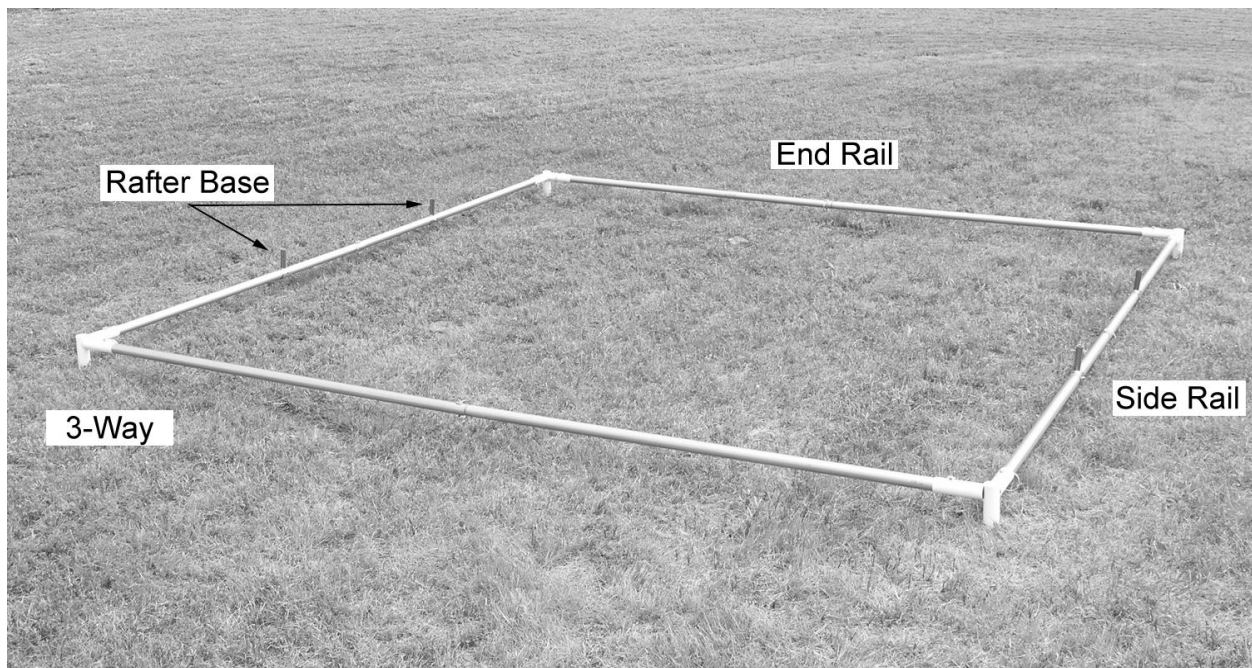
Rafter Base



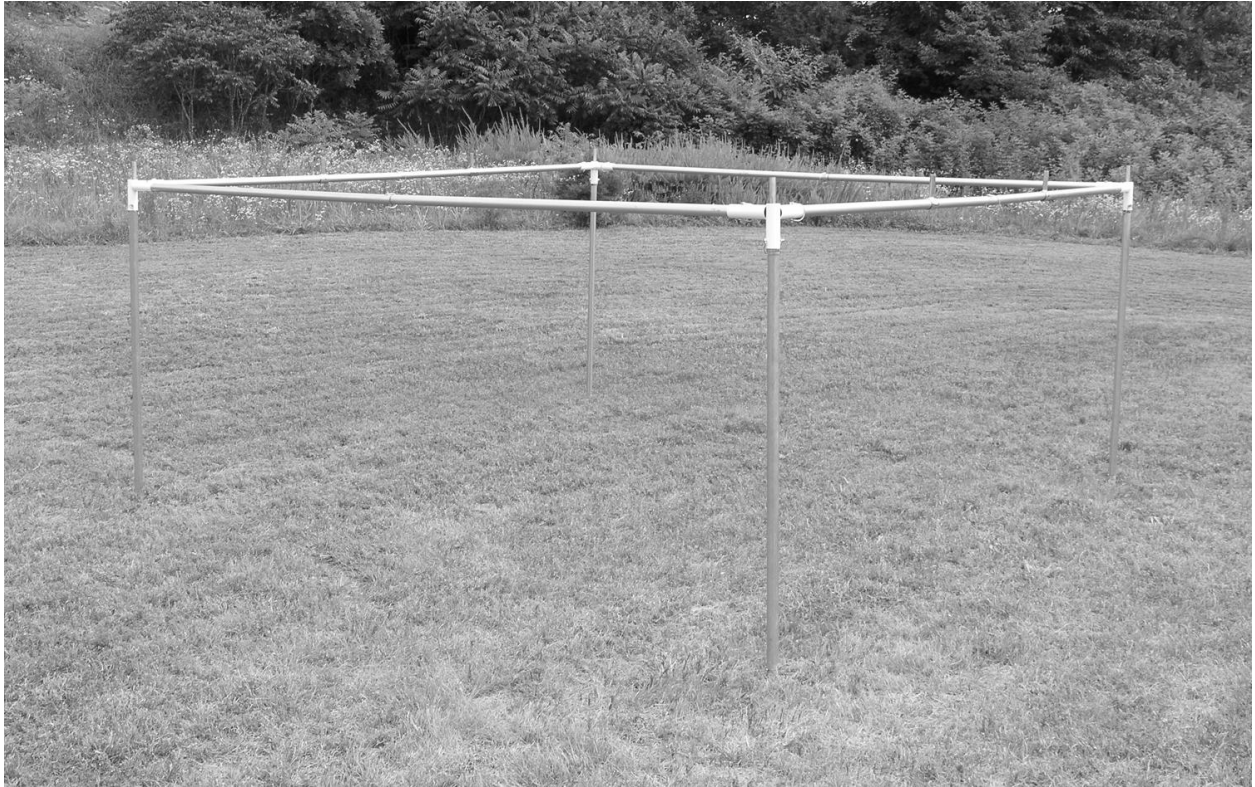
3-Way

### ASSEMBLE ROOF FRAME:

1. assemble and lock pin the side rails and end rails together.
2. Slip on, and secure rafter bases to the side rails.
3. Assemble the side rails and the end rails into a square using 3-Way joints on all four corners.
4. Install lock pins on all the joints.



7. Put the Two front legs into the front 3-ways.



8. Install the Rear Legs.



9. Slip the curved rafters onto the rafter bases on the side rails and use the center rafters to connect them into arches. Make sure to put the center end rafters with the spreader bar stops on the arches at the gable ends of the canopy.





Pole Coupler

10. assemble the spreader pole by sliding the smooth ends of both 5' poles into a pole coupler and tightening the thumbscrews, connect the PVC Riser Poles to the rafters and frame on the gable ends.

### **Roll Out The Roof:**

11. Roll the Craft Hut top out over the roof frame.
12. Fold the Craft Hut top out across the roof frame and secure the corner Velcro's.





13. Duck Underneath the top and attach the top Velcro's to the side and end rails. Attach the arch Velcro's to the arch centers.



~~14.~~ Raise the legs and zip on the walls.